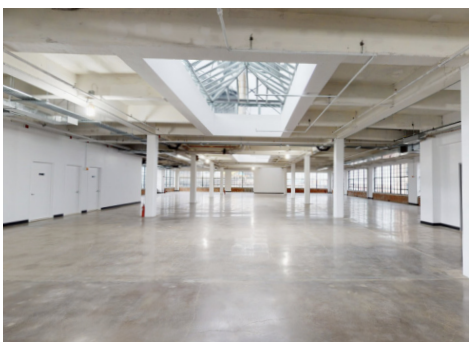
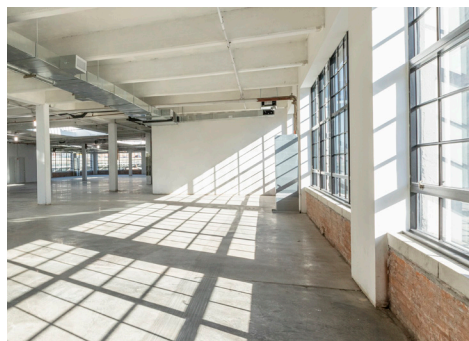
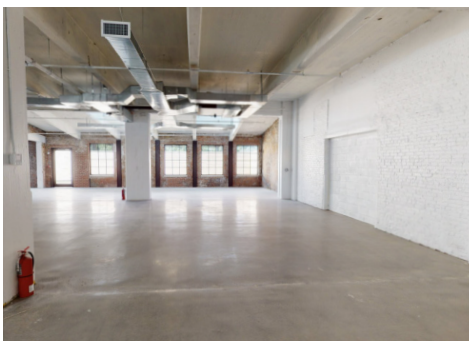




# The **CARDINAL** Building



KAUFMAN ORGANIZATION



**21-01 51st Ave.**  
**Long Island City, NY 11101**  
62,701 RSF Industrial  
Flex Building

**Available  
for Lease**

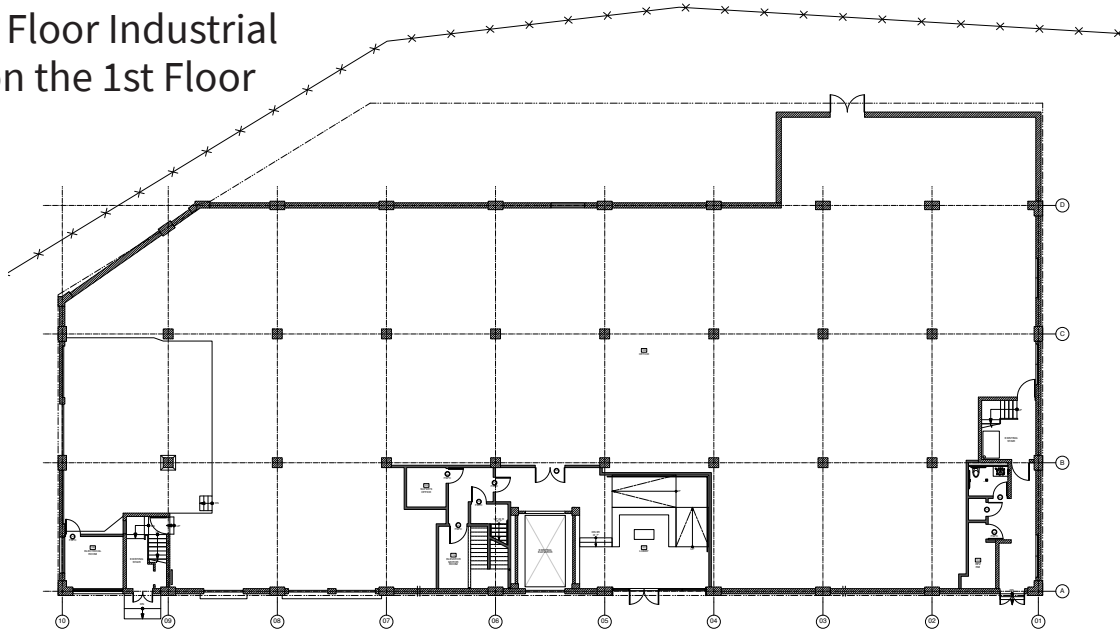


# BUILDING HIGHLIGHTS

## **1st Floor**

21,161 SF

Ground Floor Industrial  
Space on the 1st Floor



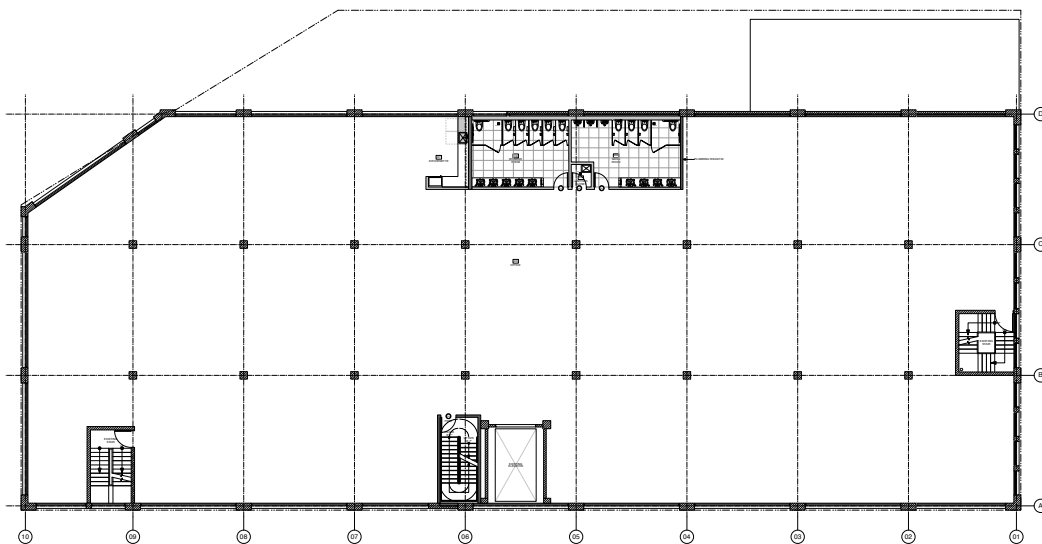
51ST AVE

① First Floor  
SCALE: 1/8" = 1'-0"

## **2nd Floor**

20,770 SF

Industrial Flex Space



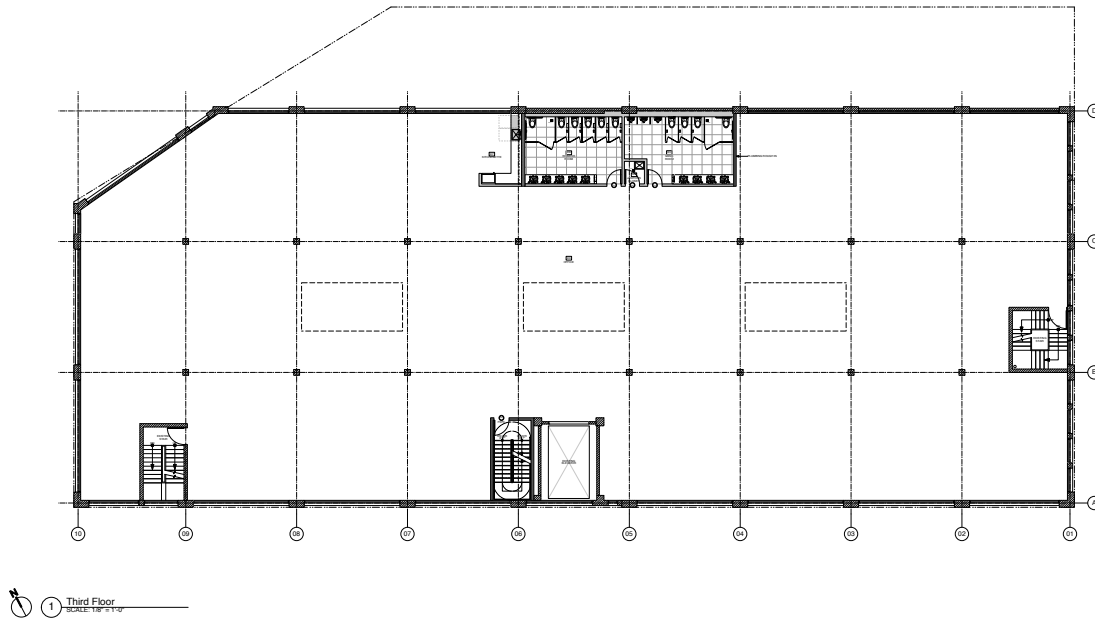
① Second Floor  
SCALE: 1/8" = 1'-0"



## 3rd Floor

20,770 SF

Industrial Flex Space



**Building Size** 62,701 RSF

**Newly Renovated** 2019

**Ceiling Height** 16' ground level, 12' 2nd floor, 13' 3rd floor

**Column Spacing** 17' East to West and 20' North to South

**Dock Doors** 1 dock with off street loading

**Parking** Back courtyard leveled, gravel installed and perimeter fence installed

# AMENITY MAP

## CONVENIENT ACCESS THROUGHOUT NYC

DESTINATION	TRANSPORTATION	TIME IN MINUTES
Queensboro Plaza	7 Train	5
Grand Central Terminal	7 Train	5
Bryant Park	7 Train	6
Times Square	7 Train	8
Hudson Yards	7 Train	12
Madison Square Garden	7 Train & 1 2 3 Transfer	16
Wall Street	7 Train & 2 3 4 5 Transfer	20
Barclays Center	7 Train & 4 5 Transfer	31

ROOSEVELT ISLAND

F

QUEENSBORO BRIDGE

N R W

LAGUARDIA AIRPORT

15 MIN



CORNELL TECH



GRAND CENTRAL TERMINAL

MTA Metro-North Railroad

5 MIN



1 COURT SQUARE

LONG ISLAND CITY

7

Long Island Rail Road

495

< 5 MIN



LIFE SCIENCES HUB



E 34th St Ferry

MIDTOWN TUNNEL



Hunters Point South Ferry

The  
**CARDINAL**  
Building



BROOKLYN



JFK AIRPORT

25 MIN

PLEASE  
CONTACT

**Leslie Lanne**

Executive Managing Director  
+1 212 292 7597

leslie.lanne@am.jll.com

**James Ferrigno**

Broker Associate

+1 212 812-6431

james.ferrigno@am.jll.com

**Jeremy Liebler**

Associate Vice President

+1 908 337 7963

Jeremy.Liebler@am.jll.com

**Daniel Morici**

Broker Associate

+1 516 361 0456

daniel.morici@am.jll.com

